



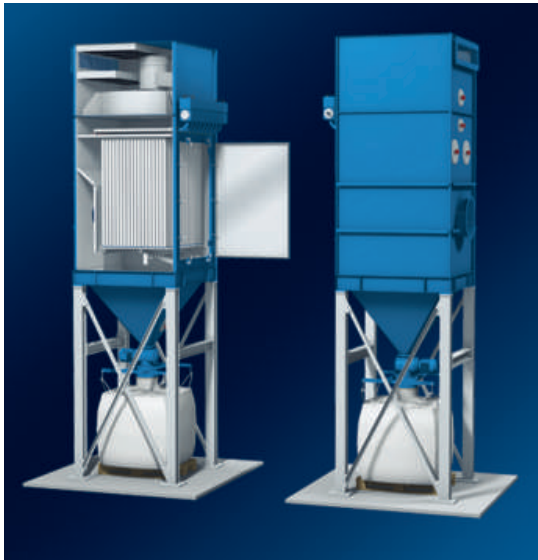
Deichmann Dust-Extraction Systems

Solution for industrial dust extraction
Kompakt Jet Filter KJF

Product brochure

Deichmann Compact Jet Filter - Type KJF

Highly efficient using smallest footprint



Deichmann Compact Jet Filter

Application: Filtration of dry dust, from coarse to sub-micron particles

Use: Industrial, pharmaceutical and chemical industries, thermal processes, metallurgy


Rated air volume flow: 2,000 ... 50,000 m³/h

Series/type: Deichmann KJF

Example: type KJF 1500/18-18

Depending on filter chamber, up to 12,000 m³/h air volume flow with 69 m² filter surface. Filter casing with discharge hood or integrated fan and sound absorber. Filter are completely mounted and are ready for connection. Selection for dust-removal area is possible with 60 l dust bin, cellular wheel sluice or alternative models.

Deichmann compact jet filter is a modular dust-extraction filter system with vertically arranged filter elements and is designed for air volume flow ranging between 2,000 and 50,000 m³/h. A maintenance-friendly service door is mounted on the unit side and enables quick and easy exchange of filter elements.

- Highly efficient Deicolon filter elements
- Residual dust contents < 1 mg/Nm³
- Long service life
- Very compact construction
- Large air volume low rate
- Short filter-exchange time
- Low differential pressure
- Fully automated pulse-jet cleaning
- Operating range up to 80 °C, special design up to 200 °C
- Ideal for downstream activated or absolute filter
- Option: configuration conforming to ATEX 

Deichmann compact jet filters are dust-collecting systems that highly efficiently implement high air-extraction capacities using a very small footprint. Applications of these compact systems range from dust filtration of industrial workplaces to air purification of cleaning and grinding booths, and include metal-spraying facilities. As a product extractor, the system has proven to be highly efficient in the chemical, pharmaceutical, and food and beverage industries – as well as in activities involving pigment production, metallurgical processes, and many similar areas.

Deichmann compact deduster KJF filters are designed for new plants as well as for the upgrading of existing facilities. Space requirements are about half those involved with conventional filter systems. The construction system of Deicolon filter elements enables to shorten the filter-exchange time by almost two-thirds.

Selection of compact filter elements

Compact filter element SFR 45

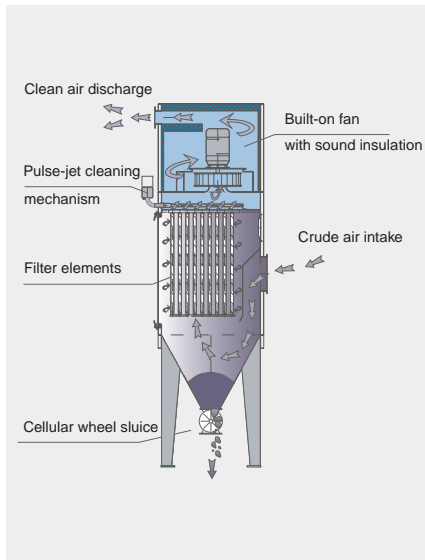
The elements with the broadest spectrum of application are in the SFR 45 range. They are widely used in their standard size of 1500/18. They consist of filter tubes that are arranged in a matrix on a supporting element. The standard element has a total of 18 individual elements, each with a length of 1,500 mm. One element therefore has a filter

surface of 3.82 m². The hollow cylinders exhibit outstanding filtration properties. Their cylindrical forms enable good reverse-flow properties and low flow resistance. Significantly greater filter-area loads can be implemented than with, for example, folded surface filters. For smaller filters, or for filters installed atop bunkers, the SFR 45 can also be individually installed into the carrier plate.

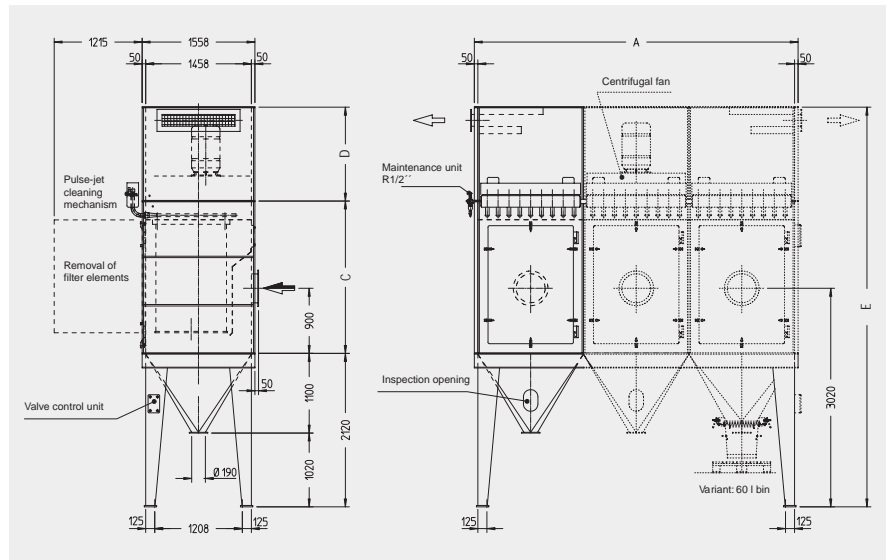


Compact filter element SFR 45

Functional schematic



Sample designation type KJF 1500/18-18



Compact Jet Filter KJF with highly efficient Deicolon filter elements

Element length	Filter type KJF	Filter surface m ²	Air volume flow m ³ /h	A mm	C mm	D* mm	D1** mm	E mm	Weight kg
1,500 mm	1500/18-18	69 m ²	6,000 ... 12,000 m ³ /h	1,558	2,106	486	972	5,198	1,178 kg
	1500/18-36	138 m ²	12,000 ... 24,000 m ³ /h	3,016	2,106	648	1,134	5,360	2,348 kg
	1500/18-54	207 m ²	18,000 ... 36,000 m ³ /h	4,474	2,106	810	1,296	5,522	3,364 kg
	1500/18-72	276 m ²	24,000 ... 48,000 m ³ /h	5,932	2,106	972	1,458	5,684	4,380 kg
1,200 mm	1200/18-18	55 m ²	5,000 ... 10,000 m ³ /h	1,558	1,782	486	972	4,874	1,132 kg
	1200/18-36	110 m ²	10,000 ... 20,000 m ³ /h	3,016	1,782	648	1,134	5,036	2,254 kg
	1200/18-54	165 m ²	15,000 ... 30,000 m ³ /h	4,474	1,782	810	1,296	5,198	3,229 kg
	1200/18-72	220 m ²	20,000 ... 40,000 m ³ /h	5,932	1,782	972	1,458	5,360	4,203 kg
1,800 mm	1800/18-18	83 m ²	7,500 ... 16,000 m ³ /h	1,558	2,430	486	972	5,522	1,178 kg
	1800/18-36	166 m ²	14,000 ... 32,000 m ³ /h	3,016	2,430	648	1,134	5,684	2,518 kg
	1800/18-54	249 m ²	22,500 ... 48,000 m ³ /h	4,474	2,430	810	1,296	5,846	3,608 kg
	1800/18-72	332 m ²	30,000 ... 64,000 m ³ /h	5,932	2,430	972	1,458	6,008	4,698 kg

*D = without fan **D1 = hood with fan



DFT GmbH Deichmann Filter Technik
Heinrich-Hertz-Str. 3 · 36179 Bebra, Germany
Phone +49 6622 504-0 · Fax +49 6622 504-44
info@deichmann-filter.de · www.deichmann-filter.de